

Basic Income and the Crises of Care

Almaz Zelleke, NYU Shanghai
BIEN 2023, Seoul



The Ethos of Capitalism and the Ethos of Care

Ethos of Capitalism:

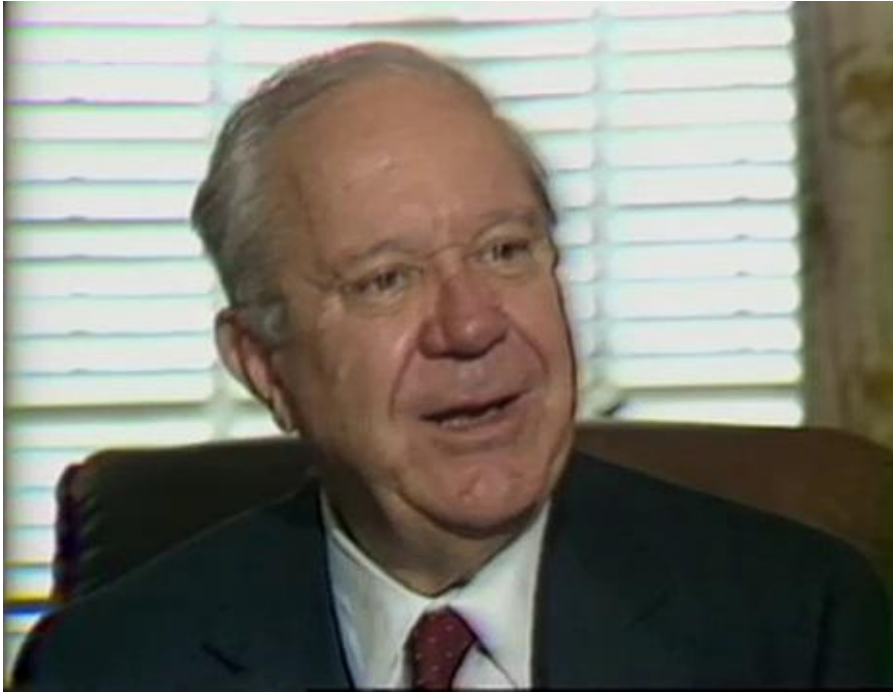
- Accumulative
- Exploitative
- Alienating

Ethos of Care:

- Unprofitable
- Reciprocal
- Relational

Market Fundamentalism prioritizes the ethos of capitalism while relying fundamentally on the ethos of care.

Senator Russell Long's Care Crisis



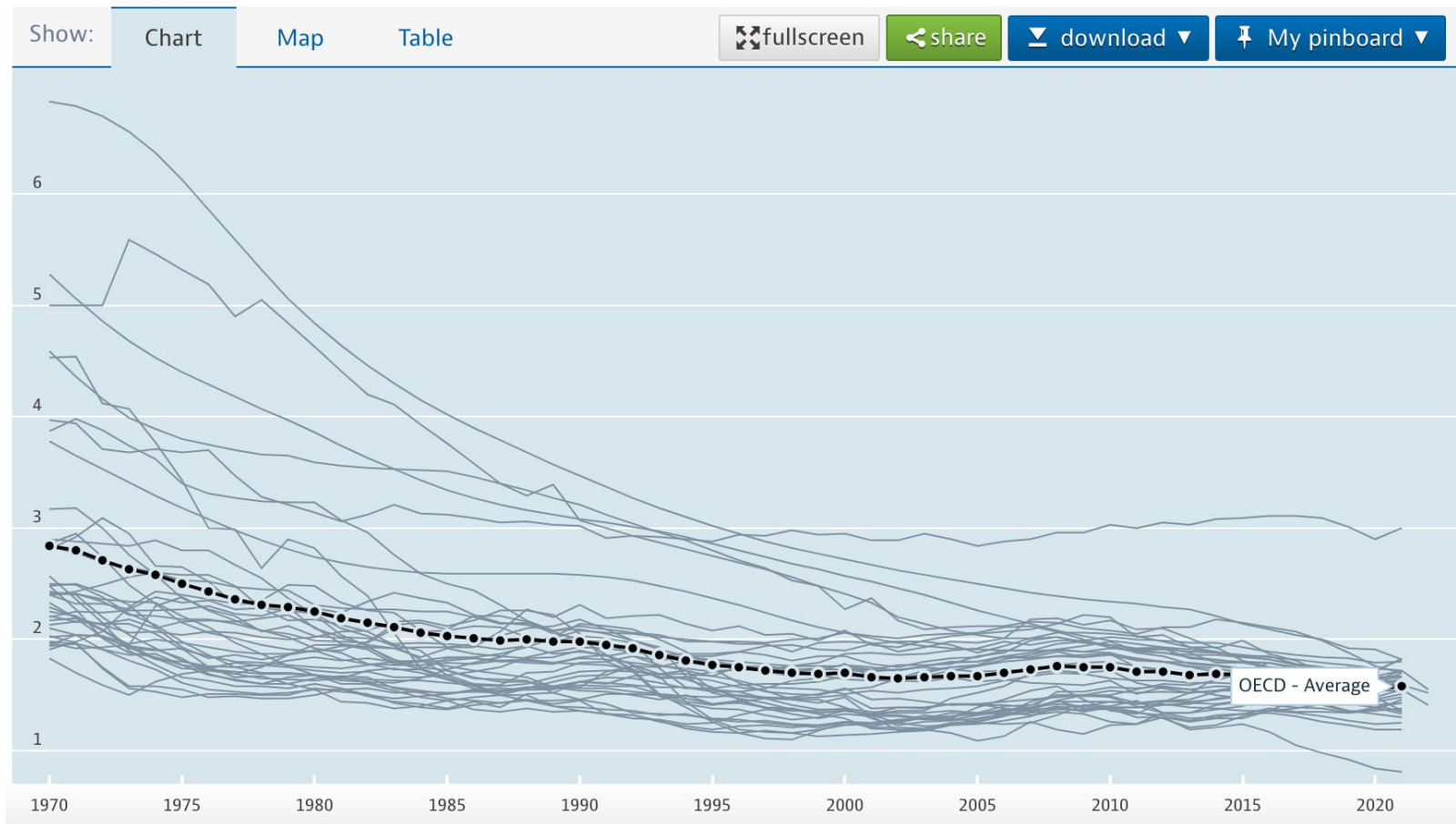
*I can't get anybody to
iron my shirts!*

Senator Russell Long, chair of the Senate Finance Committee, as quoted in the *New York Times* at the time of the defeat of the *Family Assistance Plan*, in 1971.

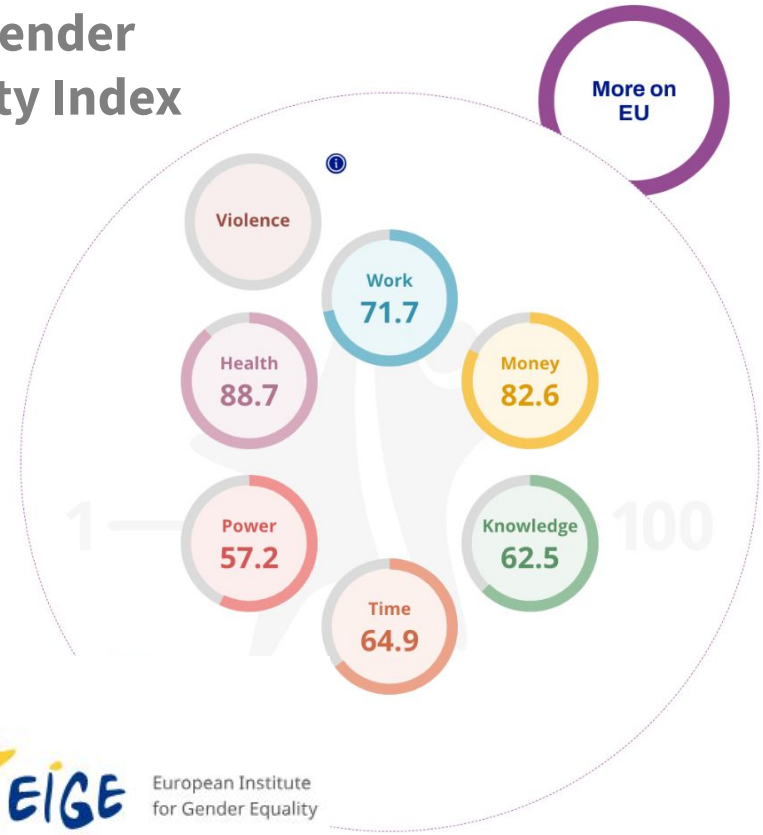
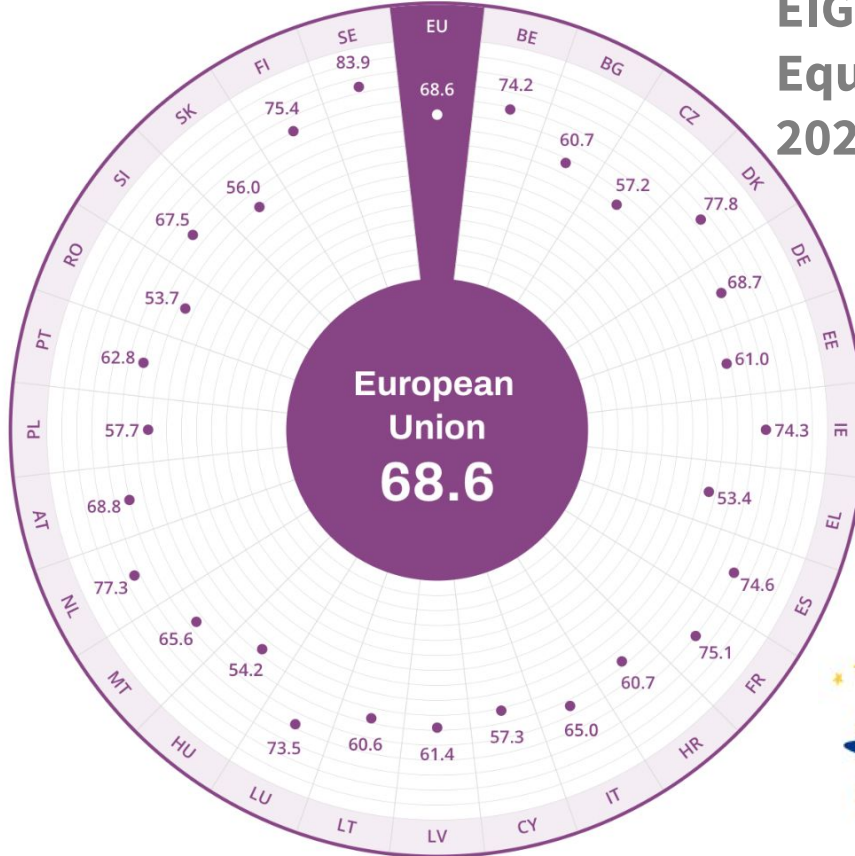
Fertility rates

Total, Children/woman, 1970 – 2022

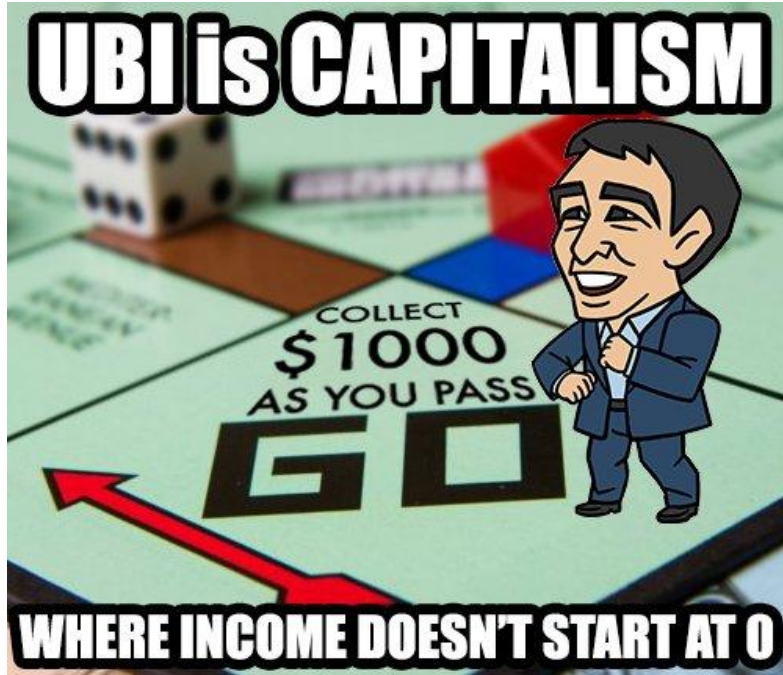
Source: Family Indicators



EIGE Gender Equality Index 2022



Two Memes about Basic Income



What is a Basic Income?

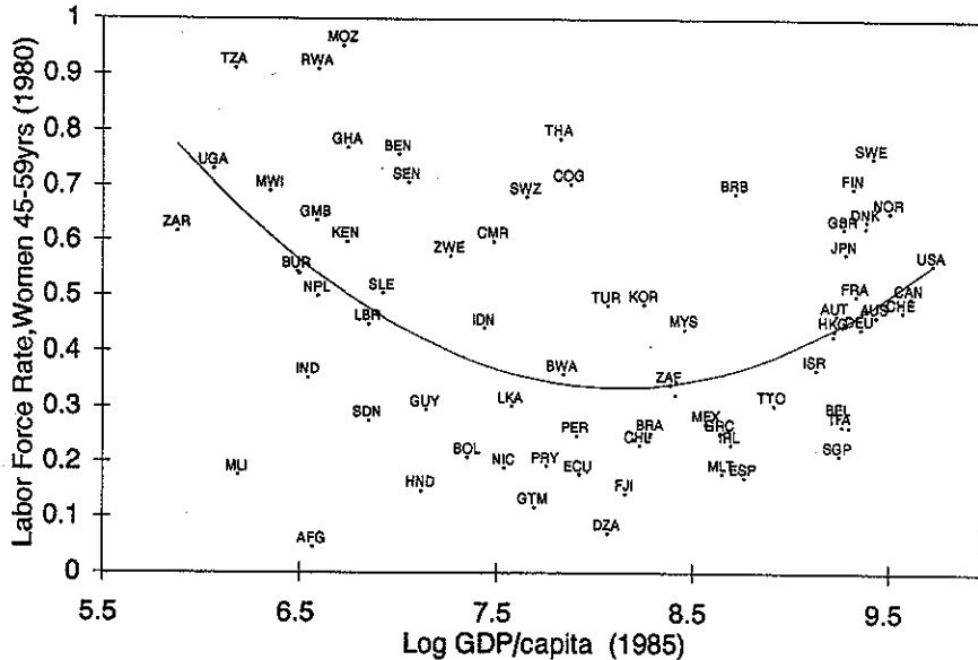
A **regular** payment to **all members** of a political community that is

- **Unconditional** (without conditions or behavioral tests)
- **Universal** (not targeted or means-tested)
- **Individual** (calculated and paid on an individual, not household basis)

Three Facts about Capitalist Social Policy States

- Economic Security = Earned Income + Income Support
- Paid “productive” work depends on a foundation of unpaid “reproductive” work
- The timing of social policy state development embeds a relation of dependency between a “breadwinner” and a “caregiver”

Women's U-Shaped Labor Force Participation



Source: Claudia Goldin, "The U-Shaped Female Labor Force Function in Economic Development and Economic History" (1995)

Figure 1
Labor Force Participation Rates for Women 45 to 59-Years-Old (c. 1980) and
the Log of GDP/Capita (1985, 1985 \$)

The U.S. Social Policy State

*Other countries
have safety nets.
The U.S. has
women.*

Sociologist Jessica Calarco, as
quoted by Anne Helen Petersen



Four Household-Based Income Support Programs

Program	Group	Benefit Calculation	Creates	BI-Inspired Remedy
Social Assistance (EITC, TANF)	Means-Tested, Targeted to Poor	Household Income Basis	Poverty Trap and Marriage <i>Penalty</i> if the poor marry	Individual Income Basis
Joint Taxation of Married Couples	Single-Earner Married Couples	Household Basis for Tax Rates and Deductions	Marriage <i>Bonus</i> of lower taxes for primary earner upon marriage	Individual Taxation (raises taxes on primary earner)
Joint Taxation of Married Couples	Dual-Earner Married Couples	Household Basis for Tax Rates and Deductions	Marriage <i>Penalty and Paid Labor Disincentive</i> for secondary earner	Individual Taxation (lowers taxes on secondary earner)
Standard Tax Exemption Amount	All Taxpayers	Tax Filing Status (highest for married couples, lower for single parents, lowest for single taxpayers)	Inequities by family size (doesn't account for children)	Individual Deduction for Each Household Member

THE IDEA OF WOMEN VOTING



**WAS ONCE JUST AS EXTREME
AS THE IDEA OF A BASIC INCOME**

Thank You!

Almaz Zelleke, NYU Shanghai

almaz.zelleke@nyu.edu

almazzelleke.com

